

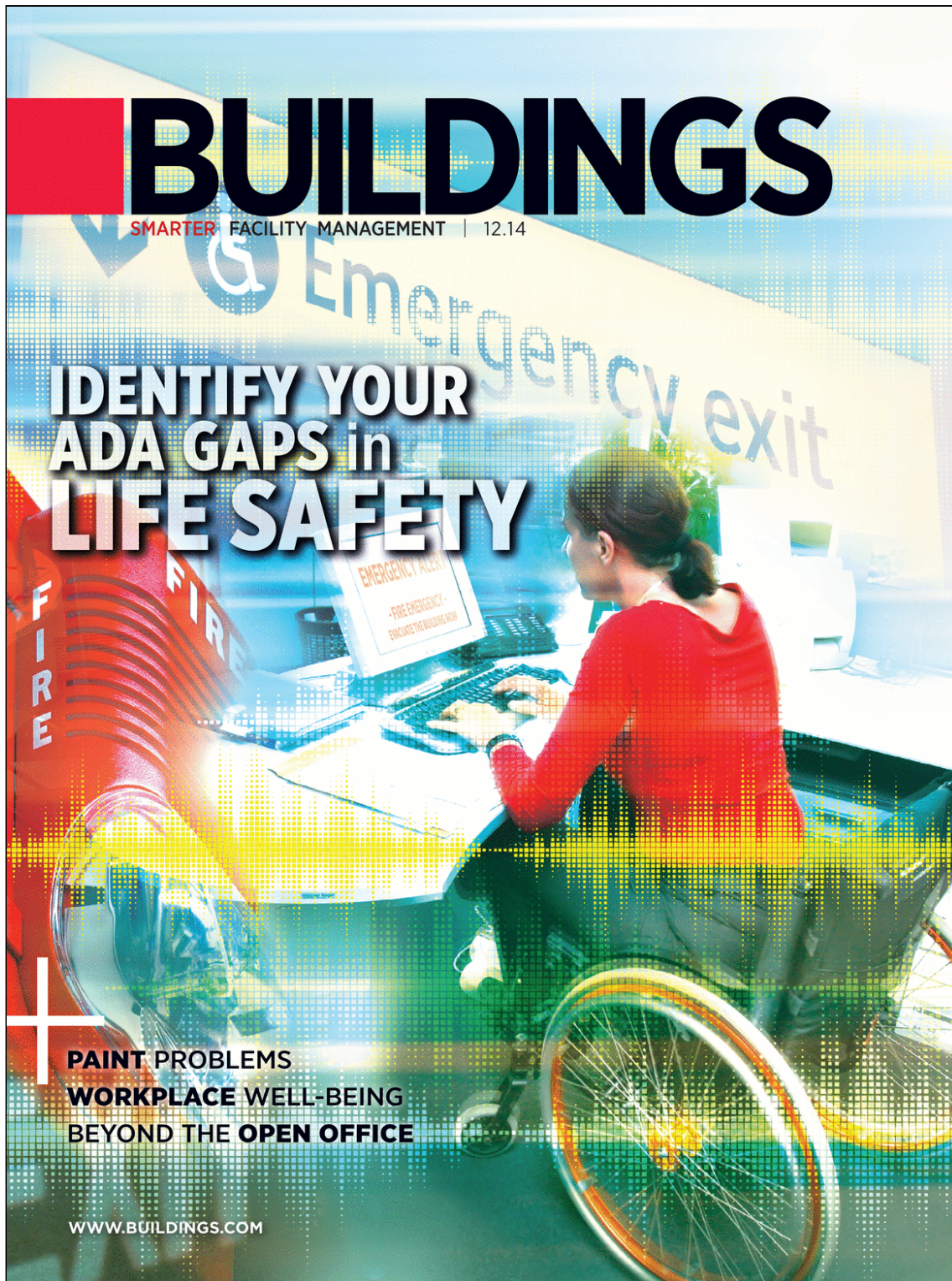
# BUILDINGS

SMARTER FACILITY MANAGEMENT | 12.14

## IDENTIFY YOUR ADA GAPS in LIFE SAFETY

**PAINT PROBLEMS**  
**WORKPLACE WELL-BEING**  
**BEYOND THE OPEN OFFICE**

[WWW.BUILDINGS.COM](http://WWW.BUILDINGS.COM)







SpeedGuard is an OSHA-compliant system that **prevents falls from trailer decks**. The drop-in railing installs in stake pockets to provide full perimeter protection. Also avail-

able as a clamp-on option for trailers without stake pockets or an extension kit for 53-foot trailers. Sets up completely in under 10 minutes on most flatbeds and includes a rolling access ladder. SPEEDGUARD by GARLOCK SAFETY SYSTEMS. Circle 254. [www.garlocksafety.com](http://www.garlocksafety.com)



Modern Miracle is a **100% waterproof wood-like flooring system** that can be installed without glue and will not swell, expand, or crack when exposed to water. Includes

pre-attached cork underlay, lifetime structural and waterproof warranty, and 15-year commercial wear warranty. Requires no expansion strips for larger areas. MODERN MIRACLE by SILVERWOOD FLOORING. Circle 257. [www.silverwoodflooring.com](http://www.silverwoodflooring.com)



With hot- and cold-water supply stops built into the body, the 640 Series **makes kitchen faucet maintenance and retrofits easier**. Features brass, chrome-plated construction

that meets lead reduction laws, ceramic mixing valves, and 22 standard models. Can be serviced without shutting off the water supply. CHICAGO FAUCETS 640 SERIES by CHICAGO FAUCETS. Circle 260. [www.chicagofaucets.com](http://www.chicagofaucets.com)



Designed for both interior and exterior doors, Finger-Guard is a maintenance-free **finger protection solution** constructed of rubber and aluminum to provide protection for

industrial applications, schools, child care centers, hospitals, and other facilities. Available in 6- and 8-inch widths for door openings up to 180 degrees. FINGER-GUARD by ZERO INTERNATIONAL. Circle 263. [www.zerointernational.com](http://www.zerointernational.com)



Desigo Mass Notification is a fully integrated, **multi-modal communication system** that can be implemented in one building or across an entire campus and used for both routine

and emergency communications. Provides a multi-layered communication method with alerts that can be targeted to specific zones, individuals, groups, or devices. DESIGO MASS NOTIFICATION by SIEMENS. Circle 255. [www.usa.siemens.com](http://www.usa.siemens.com)



Loxon XP IR Reflective Coating is designed to **reduce the exterior surface temperature of buildings** by reflecting UV rays. Resists weather, alkalinity, efflorescence,

chalking, and fading. Offers a breathable elastic finish to help bridge hairline cracks, six color choices, and complies with all VOC regulations. LOXON XP IR REFLECTIVE COATING by SHERWIN-WILLIAMS. Circle 258. [www.sherwin-williams.com](http://www.sherwin-williams.com)



The DryCool Dehumidification System is a **desiccant dehumidification module**. Features double-wall construction, enclosed insulation, removable panels, component flexibility,

and FRP pultrusion frame to eliminate the possibility of thermal bridging. Energy recovery, cooling, heating, and filtration modules also available for customization. DRYCOOL DEHUMIDIFICATION SYSTEM by MUNTERS. Circle 256. [www.munters.us](http://www.munters.us)



FAAST XT is an **aspirating smoke detector** that covers up to 28,800 square feet. Includes two-light chamber, USB connectivity, three-speed adjustable fan, and four-inlet

design for a broad range of applications. Can detect particulate up to 0.00046%/ft obscuration. FAAST XT by SYSTEM SENSOR. Circle 259. [www.systemsensor.com](http://www.systemsensor.com)



Max Patrol Self-Retracting Lifeline is compact and offers **10 feet of web working length**. Features lightweight construction, load capacity up to 400 pounds, and

brightly colored internal webbing to show when the product is damaged. Meets ANSI Z359.14 and OSHA standards. MAX PATROL by WERNER. Circle 261. [www.us.wernerco.com](http://www.us.wernerco.com)



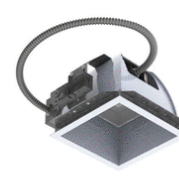
Colt Kameleon is a **natural casement ventilator** that installs into the facade to provide inlet and extract ventilation as well as allowing the entry of natural daylight. Options

include a range of infill panels, pneumatic or electronic controls, two flap profile types, and a variety of finishes. COLT KAMELEON by BILCO. Circle 262. [www.bilco.com](http://www.bilco.com)



Farpointe Ranger WRR-22 and WRR-44 are 433 MHz RFID receivers that use either 2- or 4-button transmitters to **open doors from ranges of up to 200 feet**. Features contact-

less access control, weather-resistant design, and a lithium cell battery tested to exceed 250,000 presses. FARPOINTE RANGER WRR-22 and WRR-44 by FARPOINTE DATA. Circle 264. [www.farpointedata.com](http://www.farpointedata.com)



DLSQ is an **LED downlighting option** that is 60% more efficient than CFLs without sacrificing light output. Available as a new fixture or retrofit kit, with battery backup option, and

in 4-, 8-, or 10-inch form factors. UL94 listed as an emergency lighting system. DSLQ by TERRALUX. Circle 265. [www.terralux.com](http://www.terralux.com)